

People Make Places Nadi : Invitation

July to August 2019

Vinaka! We are twin sisters, a visual artist-duo from Sydney Australia, currently in Fiji inviting the People of Nadi to take part in *People Make Places*. This global art project brings people together to consider their own sense of place and celebrate and deepen mutual understanding of diverse urban and rural regions across the globe. To date over 4,000 people we have personally encountered in 20 places across Australia, Europe, Asia, the USA, and the Middle East are participating in this collaborative work. They have all created a miniature inside one of our signature matchboxes responding to where they live.

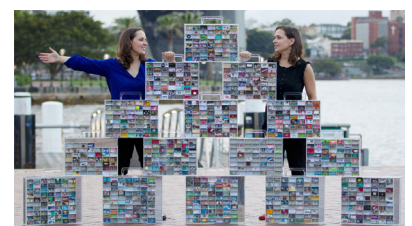
We warmly invite anyone living, working and/or studying in Nadi to join the journey by creating a matchbox artwork representing something meaningful to their experience of Nadi. We will be personally distributing and collecting matchboxes at various locations across Nadi until the beginning of August. All boxes collected will be grouped together into a *Time Capsule* to create an insightful portrait of Nadi. The *Nadi Time Capsule* will travel with us across the globe as we continue making *People Make Places*.

To ensure your box is safe to travel, before starting, please read our instructions. To pick up or deliver a box, please contact us to see where we are daily. Some of our locations will be listed on website blog **blog** (<http://www.matchboxprojects.com/blog.php>). Also feel free to join our event on our **Facebook** (Match Box Projects).

Naomi: Fiji Mobile Cell: 905 9190 Australia No/WhatsApp : +61 410 331 600
 Leanne: Australia No: +61 410 331 600 + 61 419 388 108
 Facebook: Match Box Projects / Leanne Shedlezki / Naomi Shedlezki
 E-mail: matchboxprojects@gmail.com

Looking forward to seeing you and your Nadi matchbox soon.

Leanne Shedlezki and Naomi Shedlezki



Match Box Projects Time Capsules
 Photo: Hamza Yassin

Image:

Match Box Projects: People Make Places - Sydney (work in progress), Installation View, Rocks Pop Up



www.matchboxprojects.com

People Make Places: Instructions

1. Inside our signature matchbox, create a miniature artwork responding to the theme “My Nadi”

Represent what you would like to share with the world about your Nadi. You can include a single image or a combination of items, from a photograph to an object, piece of writing, drawing, painting, collage - as long as it fits inside our box and complies with the following:



- Create your work in landscape format (horizontally) as that is how it will be displayed.
- 2D and 3D works are welcome - as long as nothing protrudes beyond the frame of the box.
- The outside of the box must remain white and untouched.
- Use materials safe to travel internationally through Customs eg no liquid, sharp objects, food, flora, fauna etc
- Avoid using small fragments like glitter, sand or similar materials as they unstick over time and ruin other boxes.
- Glue/adhere all materials very firmly to the inside of the box.
- Please make sure your box is suitable for all ages to view, as it will be shared in many public places

2. On the back of the box write your:

- Full Name (first name then family name)
- Mobile phone number (if you don't have a mobile, your home phone number)
- Where & when you received your box
- E-mail (If no e-mail, write your facebook name and facebook your box's title to us)
- Title of your box
- Please leave space for us to write the time and date you return your box

3. Match Box Delivery Points

From 27 July to early August, we will be having a number of meet-ups across Nadi. Here, you will be invited to share your matchbox with others who are returning theirs, before it enters the *Nadi Time Capsule* which will travel around the globe. Family and friends are welcome to join the journey too. They can prepare something for a box we will give them at one of our meeting points or they can create something on the spot using our Creative Kits. Our box dimensions are on the photograph above. To pick up/deliver your matchbox please contact us (our details are below). Some of our meeting points will also be sporadically uploaded our **blog** (<http://www.matchboxprojects.com/blog.php>). You can also join our **Facebook** (Match Box Projects).

4. Photography Recording

When delivering your matchbox we will photograph your hands holding your box. See below People Make Places Nadi examples:



5. Voice Recording

We are recording the stories behind everyone's matchboxes for the visually impaired and for future presentations. When you deliver your matchbox, we would love to voice record you sharing the title of your box, a description of what you have put inside it and why.

6. Copyright

When delivering your matchbox, it becomes a permanent part of our *People Make Places* series, and you will be automatically assigning copyright of same to us, (Leanne Shedlezki & Naomi Shedlezki aka Match Box Projects). This also includes the photo we take of your hands holding your box and the recording of your story. This will allow us to share your box with the world and permit us to exhibit, photograph, video, publish and present it in public/private exhibitions, in press, in print, in video/multimedia works/catalogues, and online including on our website/blog etc.

7. People Make Places celebration and bARTer/ Exchange Gift

On completion of *People Make Places*, we will invite you to a celebration with all the *Time Capsules* we have collected across the globe, when we will present you with an exchange/bARTer gift to go inside your matchbox cover. (Keep your cover safe till then.)

8. If you have any questions please contact us

e-mail: matchboxprojects@gmail.com / Fiji Mobile Cell: 905 9190 / WhatsApp: Naomi +61 410331600 Leanne +61 419388108

