

People Make Places Tokyo : Invitation

We are twin sisters, a visual artist-duo from Sydney Australia, currently in Japan inviting the People of Tokyo to take part in *People Make Places*. This global art project brings people together to consider their own sense of place and celebrate and deepen mutual understanding of diverse urban and rural regions across the globe. To date over 3,500 people we have personally encountered in 18 places across Australia, Europe, Asia, the USA, and the Middle East are participating in this collaborative work. They have all created a miniature inside one of our signature matchboxes responding to where they live.

We warmly invite anyone living, working and/or studying in Tokyo to join the journey by creating a matchbox artwork representing something meaningful to their experience of Tokyo. All boxes collected will be grouped together in a Time Capsule to create a fascinating insightful portrait of Tokyo through the hands and hearts of her people.

We will be collecting matchboxes at various Pop Up Points across Tokyo between now and mid-December where one can share what they have created with other locals before all works enter *Tokyo Time Capsules*. Our *Time Capsules* will not be buried, instead they will tour with us to be shared across the globe igniting curiosity and inspiring others to participate in *People Make Places*.

Before starting, there are instructions to follow, to make sure your box is safe to travel - please see attached.

Looking forward to seeing you and your matchbox soon.

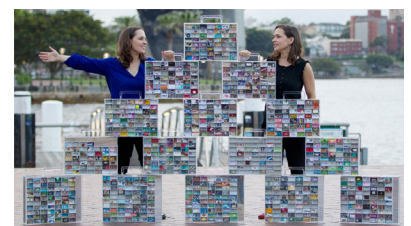
Leanne Shedlezki and Naomi Shedlezki

Naomi: +61 410 331 600 (English and Japanese)

Leanne: + 61 419 388 108 (English)

matchboxprojects@gmail.com

Japanese Instructions 日本語 [here](#)



Match Box Projects Time Capsules

Image:

Match Box Projects: People Make Places - Sydney (work in progress), Installation View, Rocks Pop Up

Leanne Shedlezki and Naomi Shedlezki in collaboration with the People of Sydney. Photo: Simon Dance 2013



www.matchboxprojects.com

